

ROX

ROX 12.0 SPORT
USER GUIDE



www.sigmasport.com

BUTTON FUNCTIONS

In addition to the touch feature, the ROX 12.0 has buttons that have the following functions:



1 POWER BUTTON:

Press and hold:

Switch on

Switch off / Display lock

2 LEFT BUTTON:

Scroll left

On the map:

Zoom

3 RIGHT BUTTON:

Scroll right

On the map:

Zoom

Workout:

Press and hold ► Initiate next phase

4 STOP BUTTON:

Stop training

Press twice:

End training

(save/delete)

5 START / LAPS BUTTON:

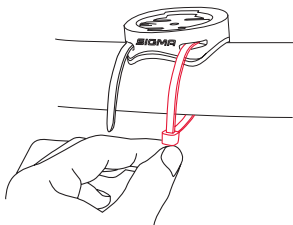
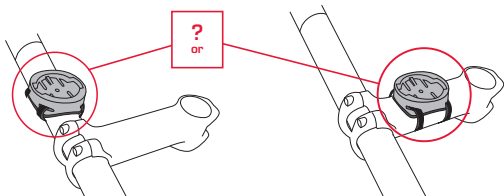
Start training / Record lap

6 HOME BUTTON:

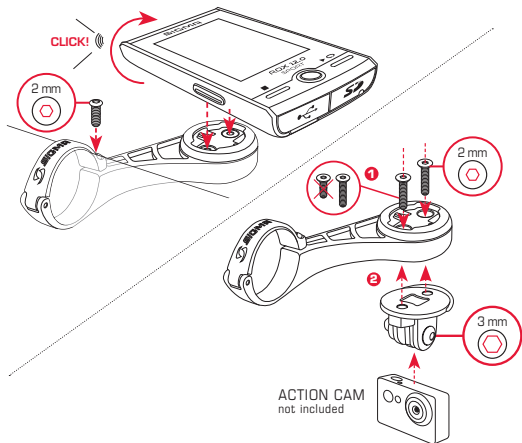
Back to Home screen

INSTALLATION OF BRACKET AND ROX 12.0

EN



INSTALLATION OF BUTLER



ANT+ SENSOR PAIRING

To use the sensors (ANT+), these must be paired with the ROX 12.0. To carry out the pairing, select the menu item **SETTINGS ► CONNECT SENSOR**. There are several options to pair the sensors:

- With **SELECT SENSOR**, you can search for a certain type of sensor.
- With **SEARCH ALL**, you can search for all the sensors in the area.
- **Enter the sensor ID**, if it is known.

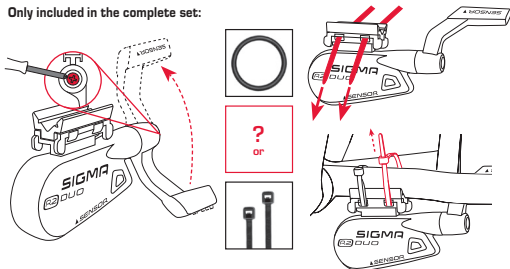
Always make sure before you start the search that only the sensors that are to be paired are activated. Start the search using SEARCH ALL or SEARCH SENSOR ► desired sensor type. After a few seconds, the sensor and the associated sensor ID are displayed. Select the desired sensor to connect. The sensors that are paired can be found under CONNECTED SENSORS.

This product is ANT+ certified and meets ANT+ specifications.
www.thisisant.com/directory

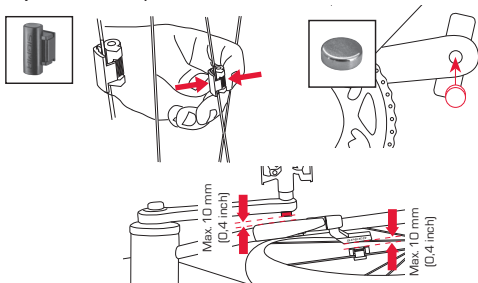
SENSOR ASSEMBLY

EN

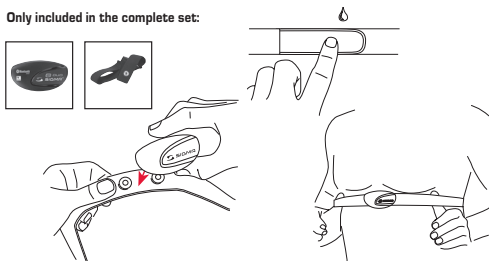
Only included in the complete set:



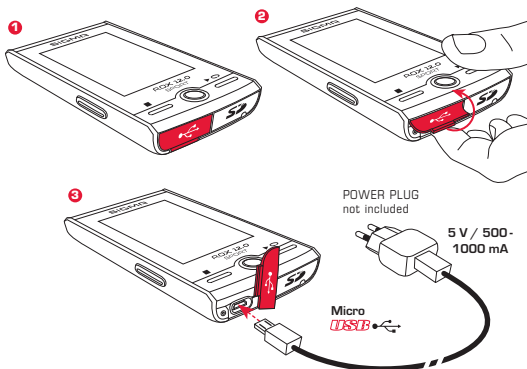
Only included in the complete set:



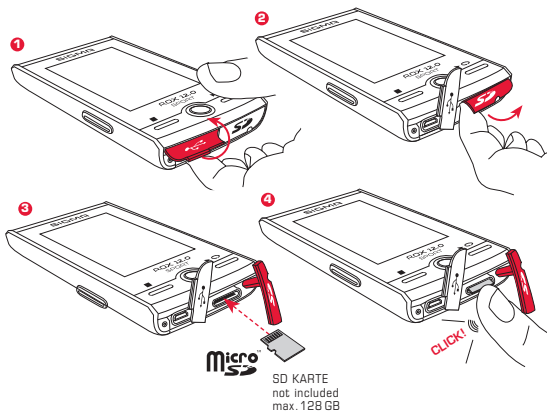
Only included in the complete set:



CHARGING THE DEVICE



INSERT SD CARD



WIFI CONNECTION

To make the most of your ROX 12.0, we recommend that you establish a WiFi connection to the home network and log in to the SIGMA Cloud right at the start. This allows the data to be transferred wirelessly to the SIGMA CLOUD or other services quickly and easily.

WORKS BEST WITH



SIGMA LINK



DATA CENTER

www.sigma-download.com



SIGMA CLOUD

www.sigma-data-cloud.com

LEGAL DISCLAIMER

HOW TO USE THE NAVIGATION

IMPORTANT: Do not operate the device while riding and always pay attention to your environment in order to recognise dangers in good time. Enter your destination before starting your ride to ensure a safe journey. Always follow the local signboards and follow the traffic rules. Rely on your own knowledge when there are discrepancies between the proposed route and the local conditions. If a route has been affected by environmental factors or the like, evaluate whether it can still be safely used.

GPS NOTE

The performance of the device is limited under certain circumstances. Thus, devices can use the terrestrial broadband network, which negatively affect the reception quality.

OSM MAPS

The maps are up-to-date at the time of manufacture. However, it may happen that already known roads, paths, house numbers, etc. are not included. This is not a mistake, it happens because the road network is in a permanent state of flux. The navigation is based on the maps of Open Street Map (OSM). OSM is a non-profit internet project. The strength lies in the fact that everyone can work on improving the quality.

UPDATES

The ROX 12.0 and the installed maps can be updated. To perform an update, a WiFi connection must be available. Since individual updates can take some time, it is advisable to carry out the update while loading the ROX 12.0.

SPECIFICATIONS

RF Interface	Frequency Range	Maximum RF output power:	Number of channels:
WLAN EU/ETSI	2402 - 2483 MHz	17.7 dBm	13
WLAN North America/FCC	2402 - 2473 MHz	17.7 dBm	11
Bluetooth	2400 - 2483 MHz	8.5 dBm	79
Bluetooth Low Energy	2400 - 2483 MHz	2.5 dBm	40
ANT+	2403 - 2480 MHz	2.3 dBm	77
GPS	1575.42 MHz	N / A (receiver only)	N / A
GLONASS	1602 MHz	N / A (receiver only)	N / A
R1 ANT+ / BLE	2.4 GHz / 2.4 GHz	-6.31 dBm / 3.04 dBm	N / A
R2 ANT+ / BLE	2.4 GHz / 2.4 GHz	0.85 dBm / 3.81 dBm	N / A

Ambient temperature

	ROX 12.0	R1 DUO	R2 DUO
Temperature range	-10°C - + 60°C	-5°C - + 50°C	-10°C - + 60°C

ROX 12.0 charging temperature range of 0°C to +50°C

MORE INFORMATION

More information can be found here: www.sigma-qr.com



GUARANTEE, WARRANTY, LEGAL DISCLAIMER

We are liable to our contracting partners for defects in line with legal provisions. The warranty does not extend to batteries. In the event of a warranty claim, please contact the retailer from whom you purchased your bike computer. You can also send your bike computer, together with your receipt and all accessories, to the address below. Please ensure you pay sufficient postage.

SIGMA-ELEKTRO GmbH

Dr.-Julius-Leber-Straße 15
D-67433 Neustadt/Weinstraße
Service-Tel. +49-(0)6321-9120-140
E-Mail: kundenservice@sigmasport.com

In the event of justified warranty claims, you will receive a replacement device. You will only be entitled to the model available at the time of replacement. The manufacturer retains the right to make technical modifications.

Batteries must not be disposed of in household waste (European Battery Law)! Please take the batteries to an official collection point or to the retailer for disposal.



LI =
Lithium Ionen

Electronic devices must not be disposed of in household waste. Please take the device to an official waste collection point or to the retailer.



Before disposal, all relevant personal data must be deleted from the device.

The CE declaration can be found at: ce.sigmasport.com/rox12

EU DECLARATION OF CONFORMITY

We, SIGMA-ELEKTRO GmbH, Dr.-Julius-Leber-Str. 15, D-67433 Neustadt/Weinstraße, declare that the bike computer ROX 12.0 and the transmitters R1 Duo and R2 Duo, when used as intended, comply with the basic requirements of RED Directive 2014/53/EU and RoHS Directive 2011/65/EU.

Federal Communication Commission Interference Statement

This device complies with Part 15 of the FCC Rules. Operation is subject to the following two conditions:

- (1) This device may not cause harmful interference, and
- (2) this device must accept any interference received, including interference that may cause undesired operation.

This equipment has been tested and found to comply with the limits for a Class B digital device, pursuant to Part 15 of the FCC Rules. These limits are designed to provide reasonable protection against harmful interference in a residential installation. This equipment generates, uses and can radiate radio frequency energy and, if not installed and used in accordance with the instructions, may cause harmful interference to radio communications. However, there is no guarantee that interference will not occur in a particular installation. If this equipment does cause harmful interference to radio or television reception, which can be determined by turning the equipment off and on, the user is encouraged to try to correct the interference by one of the following measures:

- Reorient or relocate the receiving antenna.
- Increase the separation between the equipment and receiver.
- Connect the equipment into an outlet on a circuit different from that to which the receiver is connected.
- Consult the dealer or an experienced radio/TV technician for help.

FCC Caution:

Any changes or modifications not expressly approved by the party responsible for compliance could void the user's authority to operate this equipment. This transmitter must not be co-located or operating in conjunction with any other antenna or transmitter.

Radiation Exposure Statement:

The product comply with the FCC portable RF exposure limit set forth for an uncontrolled environment and are safe for intended operation as described in this manual. The further RF exposure reduction can be achieved if the product can be kept as far as possible from the user body or set the device to lower output power if such function is available.

Industry Canada statement

This device complies with ISSED's licence-exempt RSSs. Operation is subject to the following two conditions:

- (1) This device may not cause harmful interference, and
- (2) this device must accept any interference received, including interference that may cause undesired operation.

Le présent appareil est conforme aux CNR d'ISED applicables aux appareils radio exempts de licence. L'exploitation est autorisée aux deux conditions suivantes :

- (1) le dispositif ne doit pas produire de brouillage préjudiciable, et
- (2) ce dispositif doit accepter tout brouillage reçu, y compris un brouillage susceptible de provoquer un fonctionnement indésirable.

Do not disassemble, modify or repair this product, as this may cause a fire, electric shock or product damage. Any modification will void the warranty of this product.

Ne pas démonter, modifier ni réparer ce produit, car cela pourrait provoquer un feu, un choc électrique ou un dommage produit. Toute modification annulera la garantie de ce produit.

This Class B digital apparatus complies with Canadian CAN ICES-3 (B)/NMB-3 (B).

Cet appareil digital de classe B est homologué CAN ICES-3 (B)/NMB-3 (B) pour le Canada.

Radiation Exposure Statement:

The product comply with the Canada portable RF exposure limit set forth for an uncontrolled environment and are safe for intended operation as described in this manual. The further RF exposure reduction can be achieved if the product can be kept as far as possible from the user body or set the device to lower output power if such function is available.

Déclaration d'exposition aux radiations:

Le produit est conforme aux limites d'exposition pour les appareils portables RF pour les Etats-Unis et le Canada établies pour un environnement non contrôlé. Le produit est sûr pour un fonctionnement tel que décrit dans ce manuel. La réduction aux expositions RF peut être augmentée si l'appareil peut être conservé aussi loin que possible du corps de l'utilisateur ou que le dispositif est réglé sur la puissance de sortie la plus faible si une telle fonction est disponible.

ROX 12.0 SPORT

SIGMA-ELEKTRO GmbH

Dr. -Julius-Leber-Straße 15
D-67433 Neustadt/Weinstraße
Tel. + 49 (0) 63 21-9120-0
Fax. + 49 (0) 63 21-9120-34
E-mail: info@sigmasport.com

SIGMA SPORT USA

North America
1860B Dean St.
St. Charles, IL 60174, U.S.A.
Tel. +1 630-761-1106
Fax. +1 630-761-1107
Service-Tel. 888-744-6277

SIGMA-ELEKTRO (Hong Kong) Ltd

Room 2010, 20/F, No.1 Hung To Road,
Kwun Tong, Kowloon, Hong Kong

081110/1



www.sigmasport.com